



Application Note

FTDI Driver 38457-01B Installation Instructions

FTDI Driver 38457-01B Installation Instructions.doc (Rev.A)
(This driver supports Windows 98, 2000 and XP only)

Per this Application Note, FTDI driver 38457-01B supports the following USB displays:

PKD-4UP3 PKD-UP03 PC522-3415

FTDI Driver Installation:

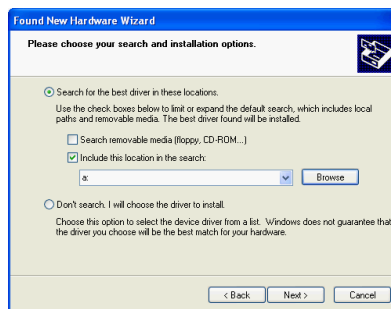
A) Driver 1 (USB Serial Converter) Setup:

- Download driver package **38457-01B** to a folder of your choice.
- Plug in Pole Display cable to Host PC USB port.
- Verify **Found New Hardware** message pops up and follow instructions below.

1) Verify message and make sure button is indicated as shown
Click **Next**



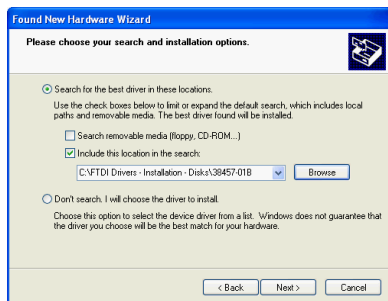
2) Check button as shown and click Browse.



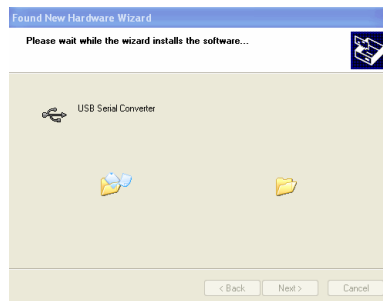
3) Select driver folder.
Click **OK**.



4) Verify selected location.
Click **Next**.



5) Wait for next message...



6) Click **Continue Anyway**



7) Click **Finish**



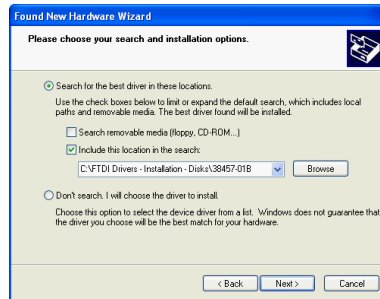
B) Driver 2 (USB Serial Port) Setup:

- Verify **Found New Hardware** message pops up and follow instructions below.

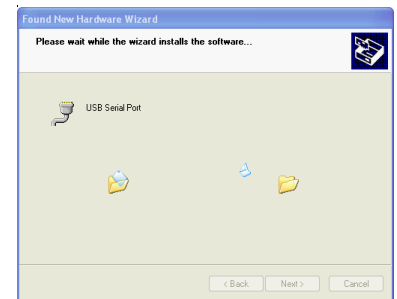
1) Verify message and make sure button is indicated as shown
Click **Next**



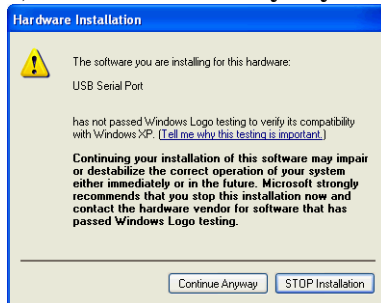
2) Verify selected location.
Click **Next**



3) Wait for next message...



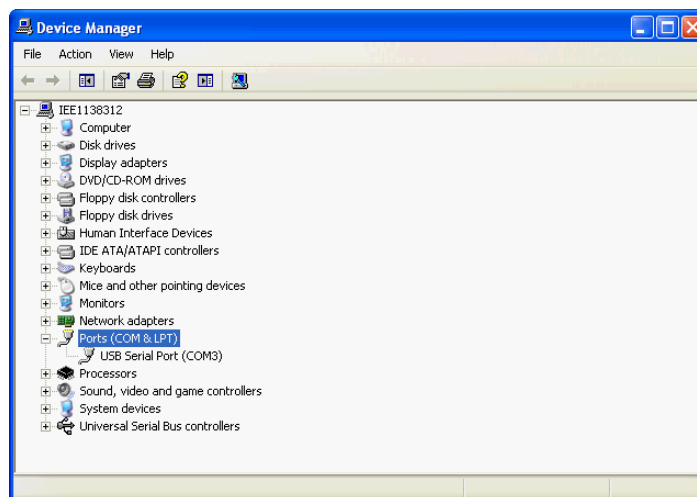
4) Click **Continue Anyway**



5) Click **Finish**



- In Device Manager, **USB Serial Converter** driver is located under **Universal Serial Bus Controllers**.
- **USB Serial Port** can be found under **Ports (COM & LPT)**. The COM port # can be changed if desired.



- If an OPOS driver is needed, follow instructions contained in IEE Application Note:
OPOS 1.9 Driver V5.50 and SOTest Setup Instructions